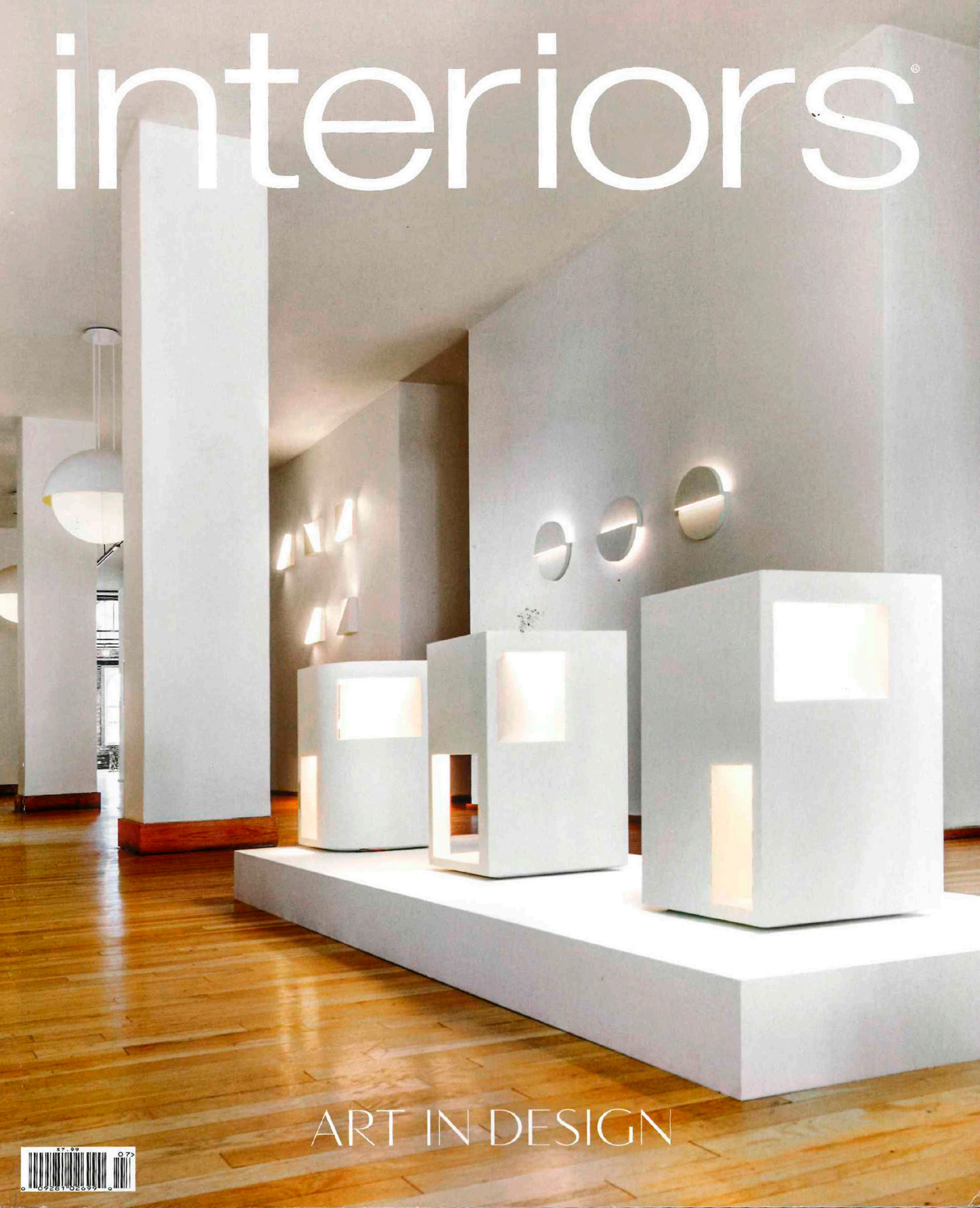
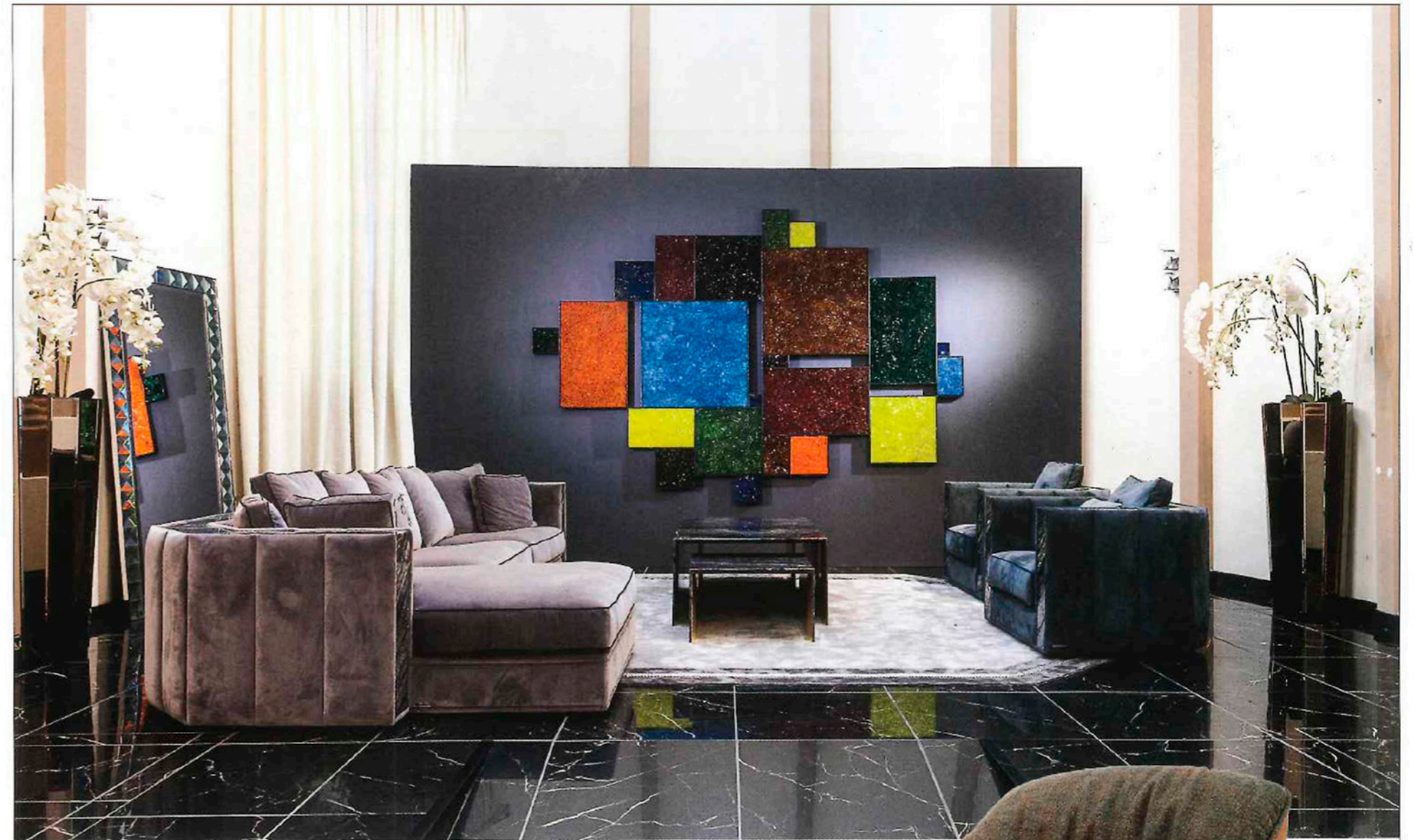
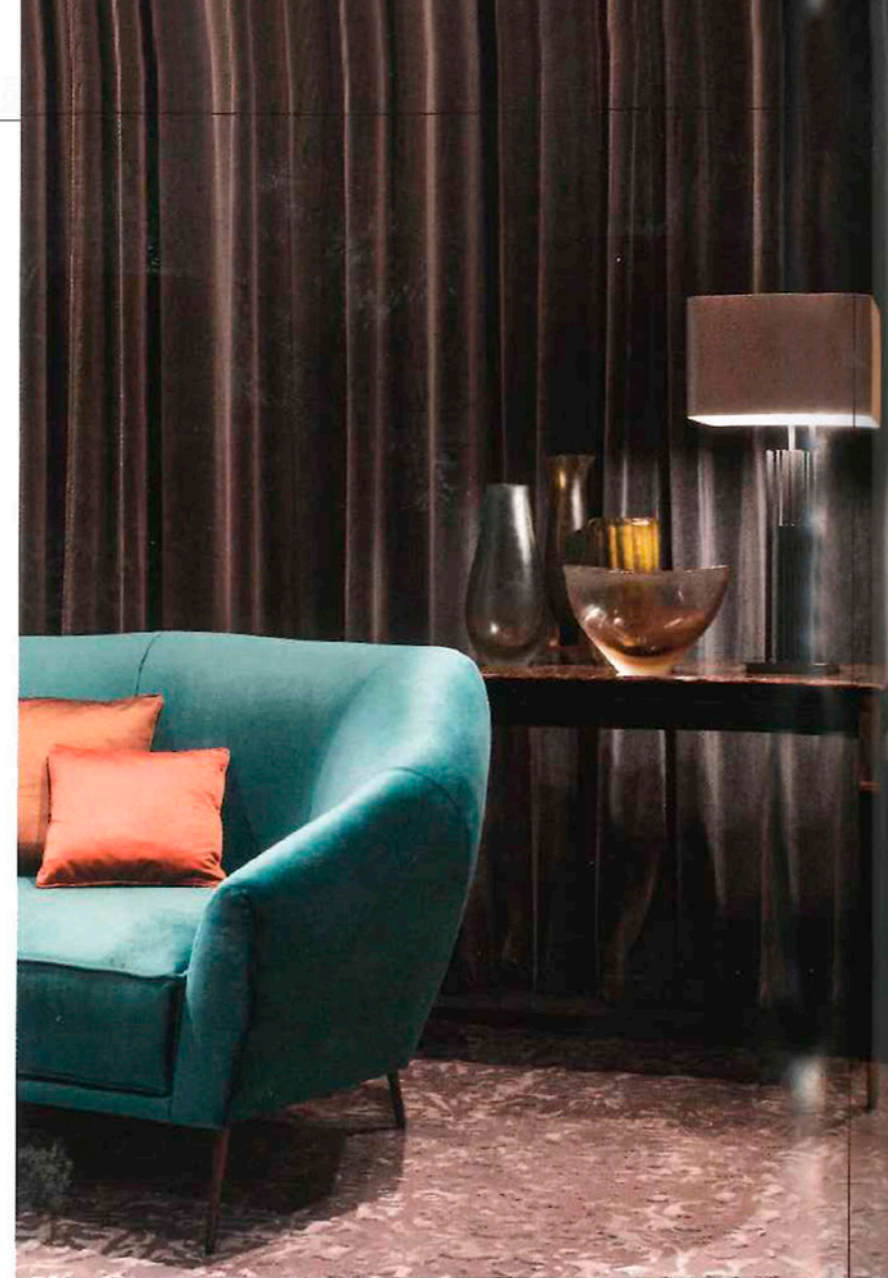


interiors®



ART IN DESIGN





At Salone del Mobile, and its biannual companion fair EuroLuce (which alternates with EuroCucina) natural materials, greenery, postmodern lines and artist collaborations dominated. Among our favorites was CIPHER (top left), a lamp created by the Czech art glass manufacturer Lasvit and the design firm Yabu Pushelberg. Under the creative eye of Andrea Rubelli, Rubelli Casa impressed with a new collection of furnishings (above) reflecting the brand's sublime understanding of textiles and furniture. Riva 1920 paired up with designer Karim Rashid on Speed (left), a solid-wood table that lives up to its name.

Known for its partnerships with artists, Italian brand Visionnaire brought elements from their exhibition at Bologna Design Week (opposite top) with the art collective CaCO3. They also showed new pieces from Steve Leung, Alessandro La Spada and **Mauro Lipparini**. Rolf Benz debuted a new highly tailored side chair, the 641 (opposite center). Gallotti & Radice launched their new Home Collection, including the marble Cookies table (opposite bottom). ■ Salone del Mobile, salonemilano.it

